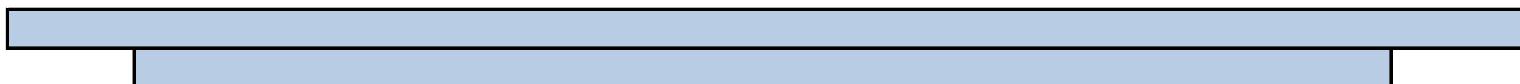


Malverne Senior High School: Successful Schools (Staff Report)



Building People and Organizations





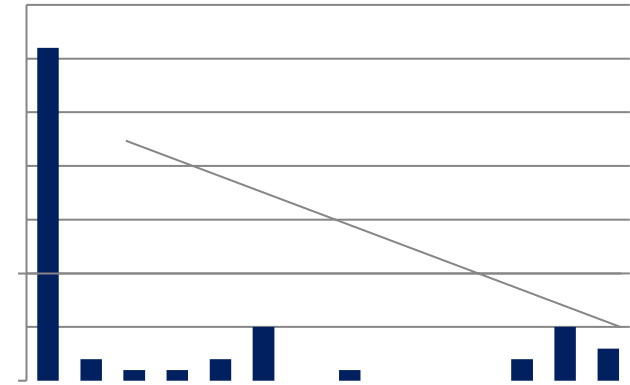
1. Shaded areas indicate totals of SA/A and VI/I as follows: Green-75% or greater. Yellow- 50%-74. Red- less than 50%.

Check In

Reponse Rates

All Staff: 53/66 80%

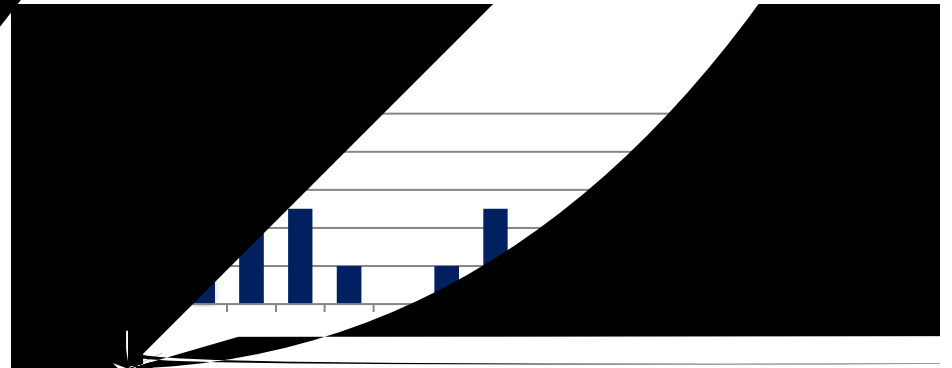
Position	Count
Teacher - Gen Ed (Including Librarian)	31
Teacher - Special Ed	2
Teacher - MLL	1
Health Care Professional (OT, PT, Nurse)	1
Student Support Services (Psychologist, Guidance, Counselor, Attendance)	2
Principal/Assistant Principal	5
Teacher Assistant	0
Professional Support Staff (Speech Pathology, Social Worker)	1
Mentor	0
Community Services Provider	0
Coaches (Data, Professional Learning)	0
Security/Monitor	2
District wide staff working in the school	5
Other	3



5
Technology 2
Education 0
LOTE 2
Education 5
Training Program 0
Community Programs 0
Security Services 0
Food Services 0
Physical Education/Health 3
Instructional or Data Coach 0
Multi-Departmental 7
Other 7

Gender

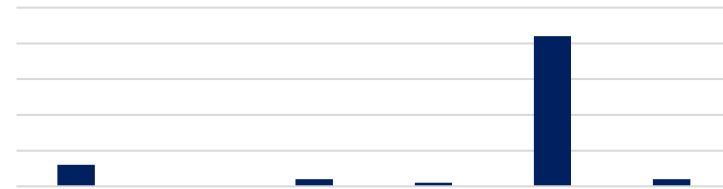
Male 22
Female 30
Other 1



Check In

Ethnicity

Black/African American	6
American Indian/Alaska Native	0
Hispanic/Latino	2
Asian or Native Hawaiian/Other Pacific Islander	1
White	42
Multiracial	2



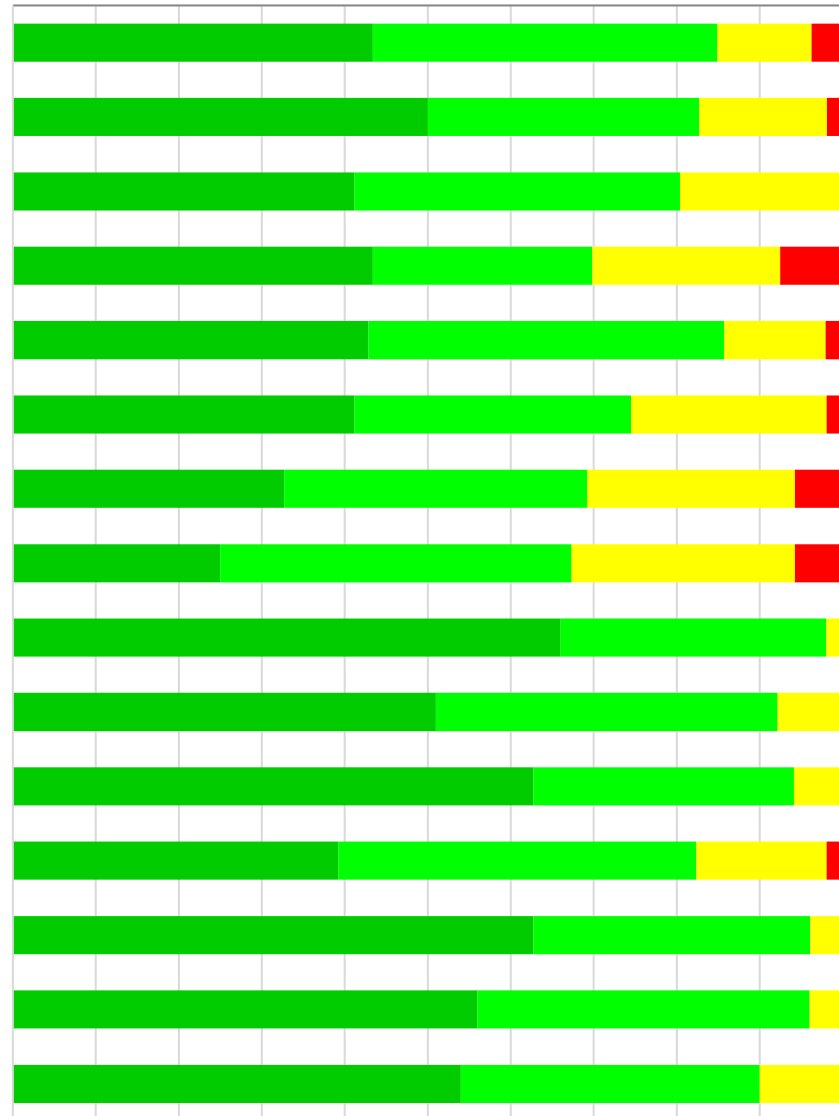
Years Worked in School


Less than or 1 year	4
2-3 years	5
4 or more years	44

All - My experience as a staff member in this school:

	SA/A	SA	A	S	D	SD	SS	Res	NA
1. This school is specifically set up to meet students' needs.	84.9%	43.4%	41.5%	11.3%	3.8%	0.0%	4.25	53	0
2. Students' academics/skills/learning has improved.	82.7%	50.0%	32.7%	15.4%	1.9%	0.0%	4.31	52	1
3. Students' self-image (how students present to others) has improved.	80.4%	41.2%	39.2%	19.6%	0.0%	0.0%	4.22	51	2
4. Students are gaining the determination and perseverance needed to be successful.	69.8%	43.4%	26.4%	22.6%	7.5%	0.0%	4.06	53	0
5. Students have increased pride in their background/heritage/culture.	85.7%	42.9%	42.9%	12.2%	2.0%	0.0%	4.27	49	4
6. Students' confidence and self-esteem (feelings about themselves) has increased significantly.	74.5%	41.2%	33.3%						

Successful Schools





How sure are you (give us a percentage) that 95% or greater of your students will graduate from high school and be successfully prepared for College and/or Career?

90-100 %	23
80-89%	18
70-79%	4
Less than 70%	7